

Robinson Terminal North Rooney Properties

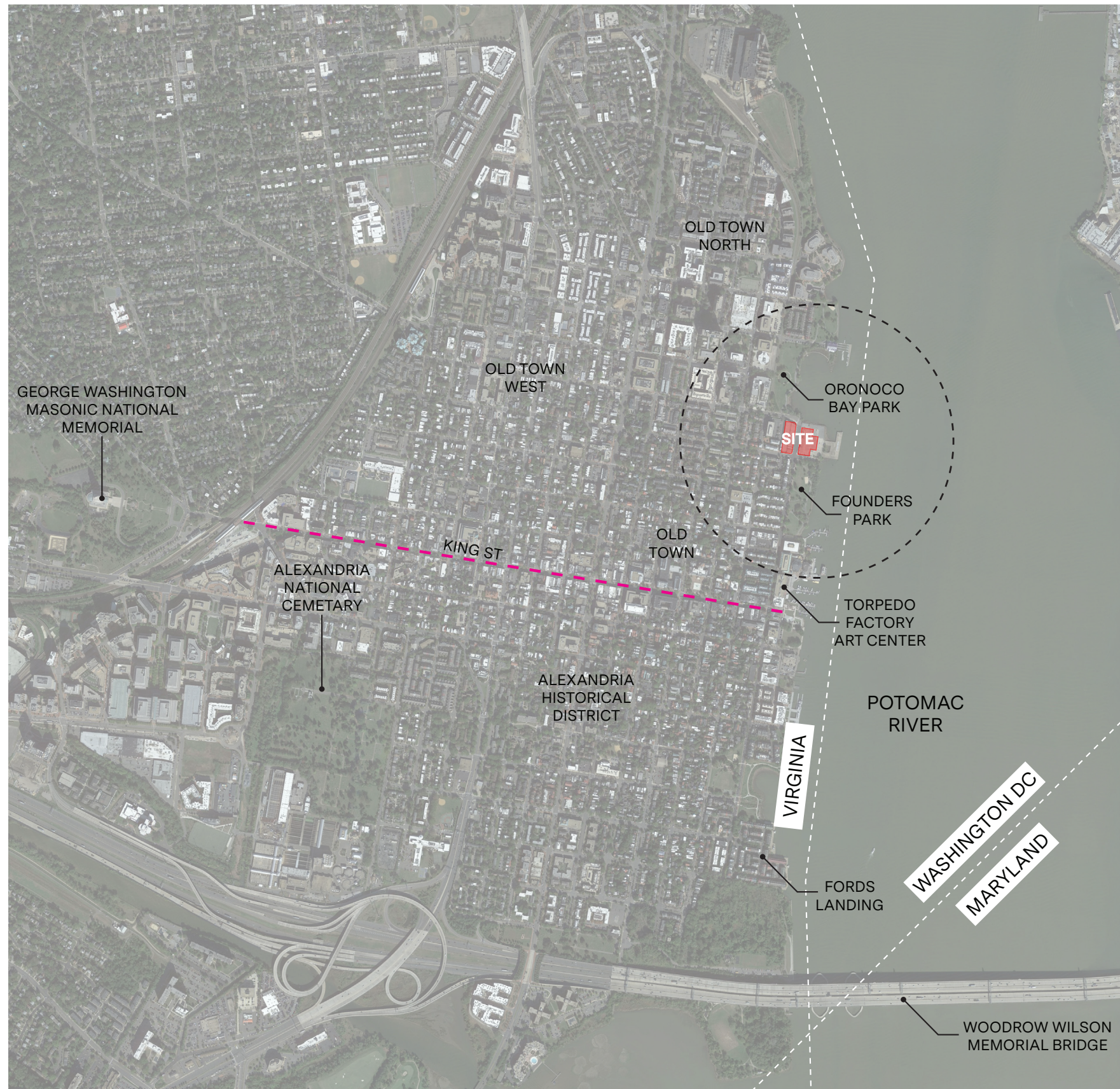
Community Meeting
02.29.24

Agenda

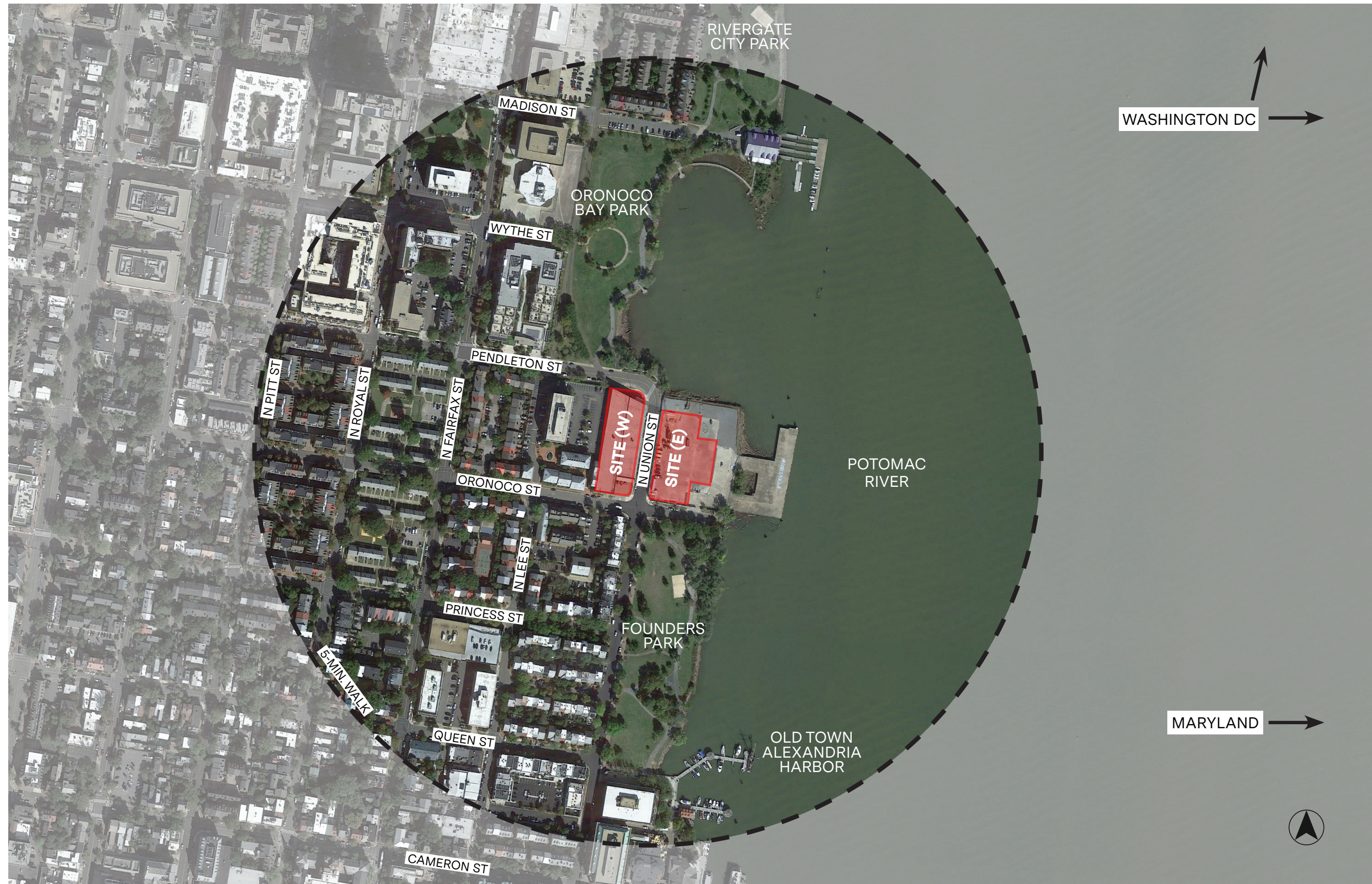
<i>Overview</i>	3	<i>East Building</i>	20
Site Location	4	Aerial View from South East	21
Site Location - 1/4 mile radius	5	View from Waterfront	22
Site Information	6	N. Union St. Main Entry	23
Development Approval Process	7	Oronoco St. & N. Union St. - View from SW	24
MA Introduction	8	East Building Palette	25
Context	9		
<i>Building Massing</i>	10	<i>West Building</i>	26
Site	11	Aerial View from South East	27
Proposed Project Massing	12	Oronoco St. & N. Union St. - View from SE	28
Proposed Project	13	Pendleton St. & N. Union St. - View from NE	39
West Building Views	14	West Building Palette	30
Site Diagram	15		
<i>Building Planning</i>	16	<i>Landscape</i>	31
Ground Floor Plan	17	Waterfront Plan Open Space Overview	32
		Context Map	33
		Concept	34
		Potential Program “Sunny Weekend”	35
		Potential Program “Arts Walk”	36
		Potential Program “Fireworks”	37
<i>Design Character</i>	18	Site Character	38
Design Narrative	19	Site Character	39
		Aerial View from South East	40

Overview

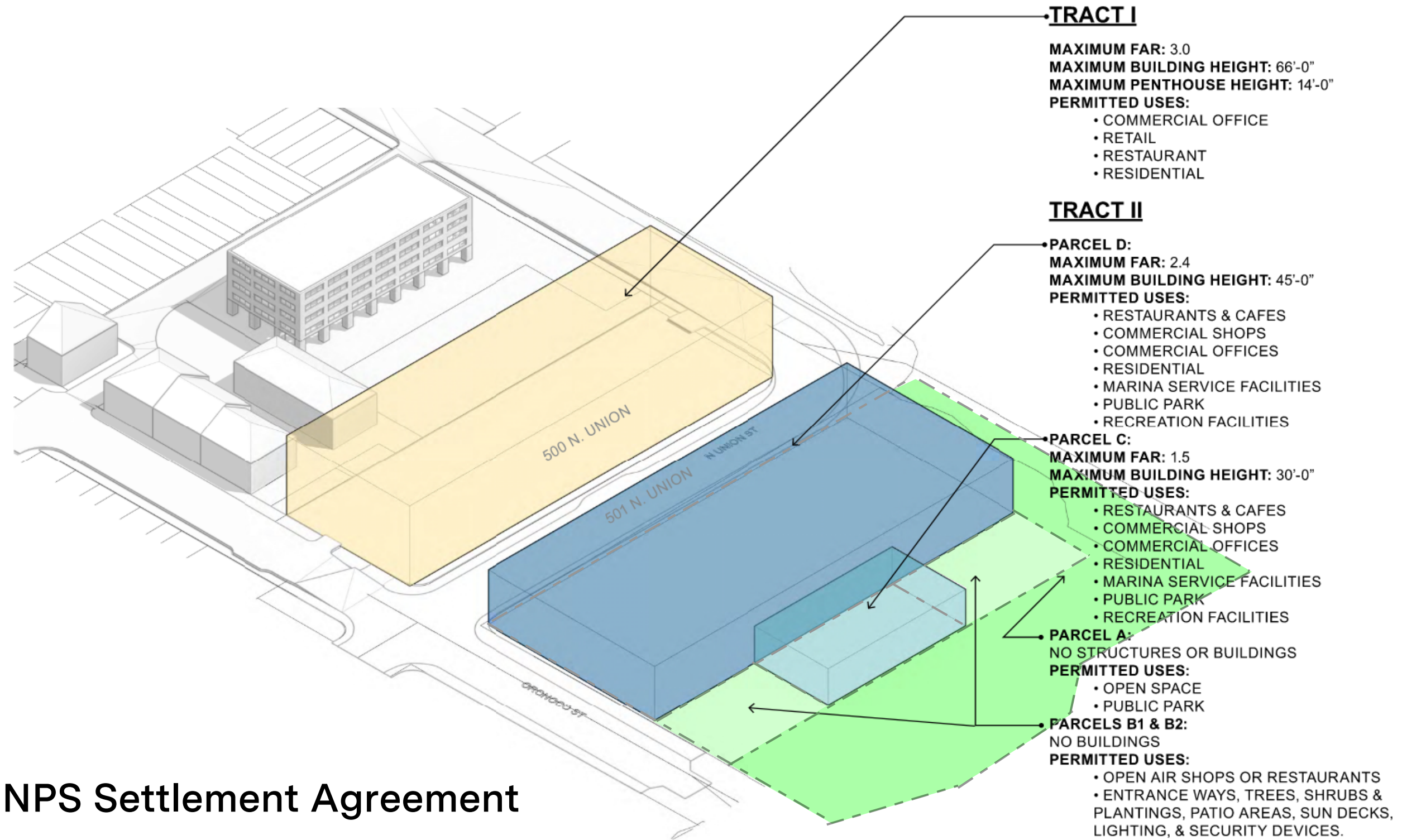
Site Location



Site Location - 1/4 mile radius



Site Information



NPS Settlement Agreement

Development Approval Process

1. 1983 NPS Settlement Agreement

2. 2012 Waterfront Small Area Plan

3. 2015 Prior DSUP Approval

4. 2024 New DSUP Request

- a. NPS
- b. W-1 Zoning District
- c. UDAC
- d. BAR
- e. Waterfront Commission

5. Development Review Process

- a. Concept 1: Submitted Nov. 2023
- b. Concept 2: March 2024
- c. DSUP: Fall 2024
- d. Public Hearings: Dec. 2024 – Jan 2025

MA | Morris Adjmi Architects

We create iconic buildings that stand out by fitting in - contemporary architecture and environments inspired by art, history and context



Front & York, Dumbo, Brooklyn



Wythe Hotel, Williamsburg, Brooklyn



The Huron, Greerpoint, Brooklyn



The Wharf Parcel 10, DC

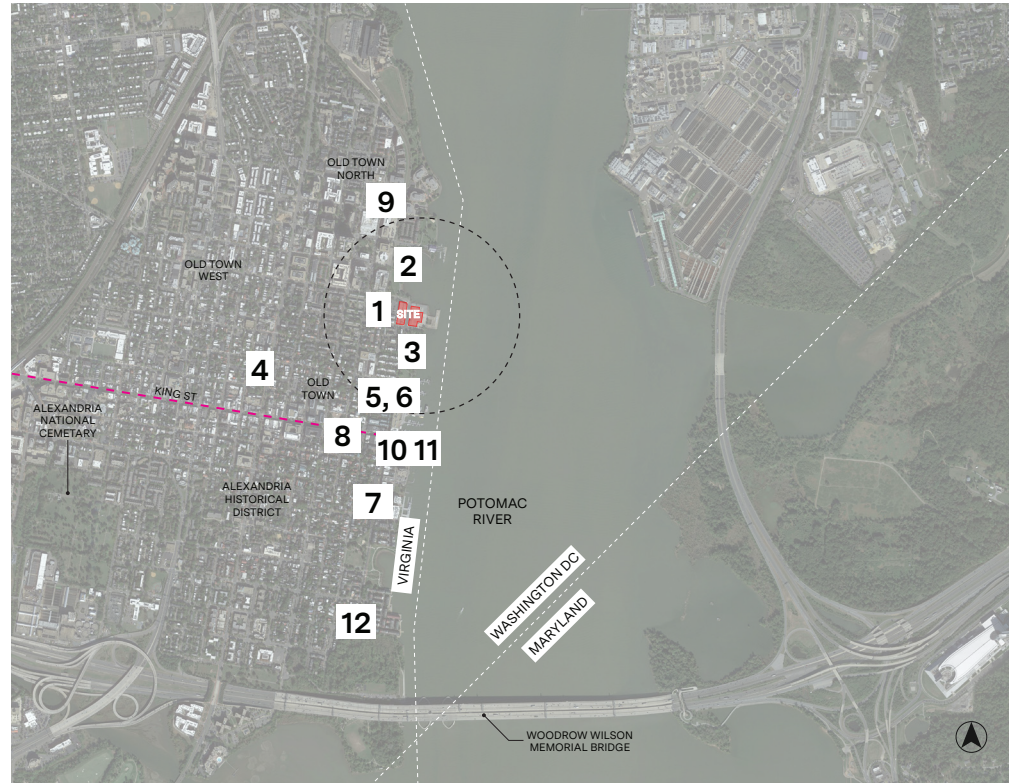


Port Covington, Baltimore, MD



Four Seasons Hotel & Residences, Charleston, SC

Context



1. ROBINSON TERMINAL & ORONOCO ST



2. ORONOCO BAY PARK



3. FOUNDERS PARK



4. OLD TOWN ALEXANDRIA HOMES



5. SOUTH UNION ST



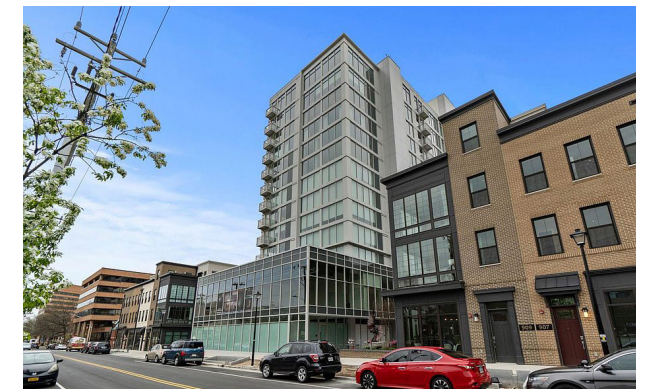
6. UNION ST PUBLIC HOUSE



7. ROBINSON TERMINAL SOUTH



8. KING ST



9. OLD TOWN NORTH NEW DEVELOPMENT



10. TORPEDO FACTORY



11. TORPEDO FACTORY ART CENTER



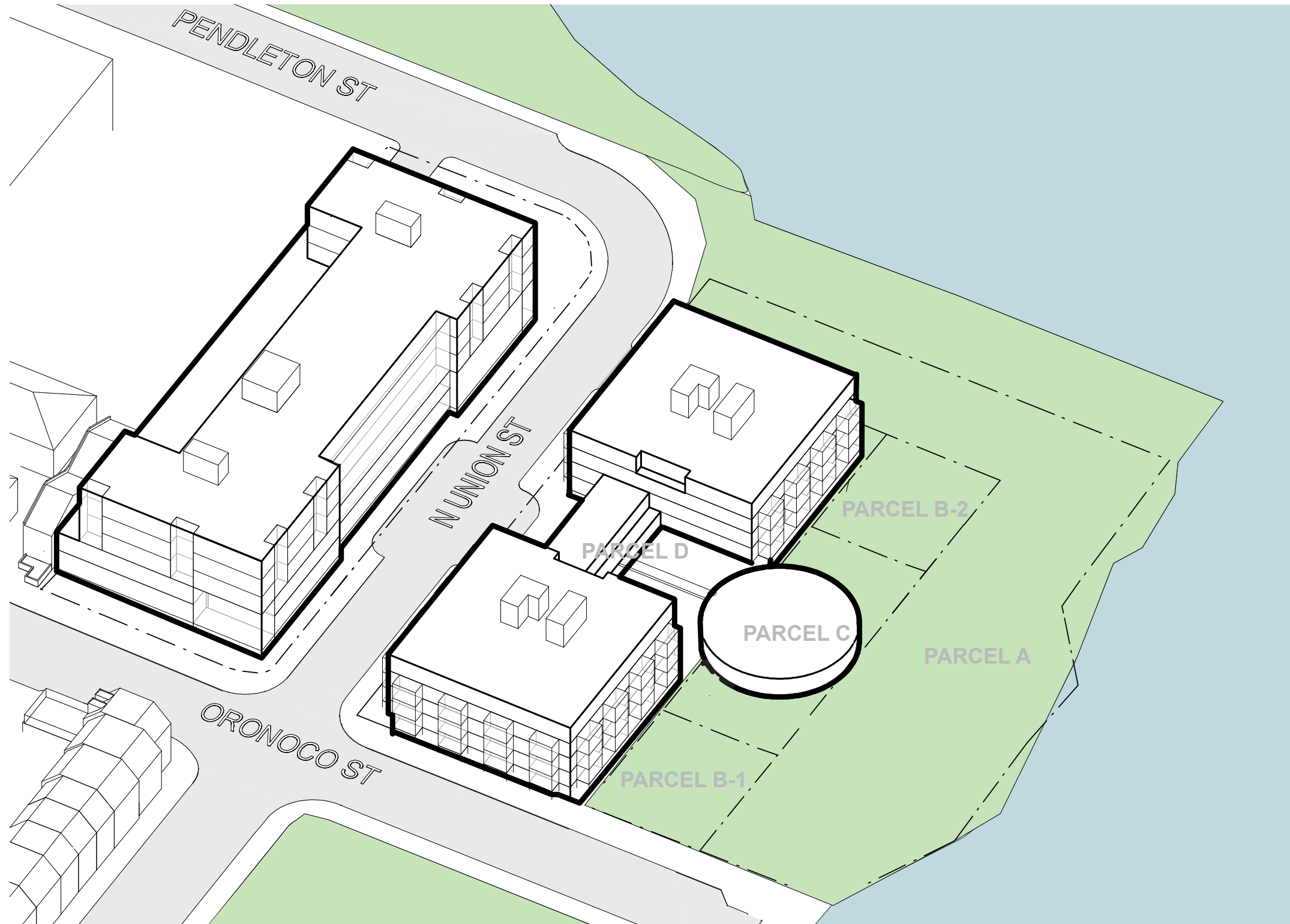
12. DEMOLISHED FORD FACTORY

Building Massing

Site



Proposed Project Massing



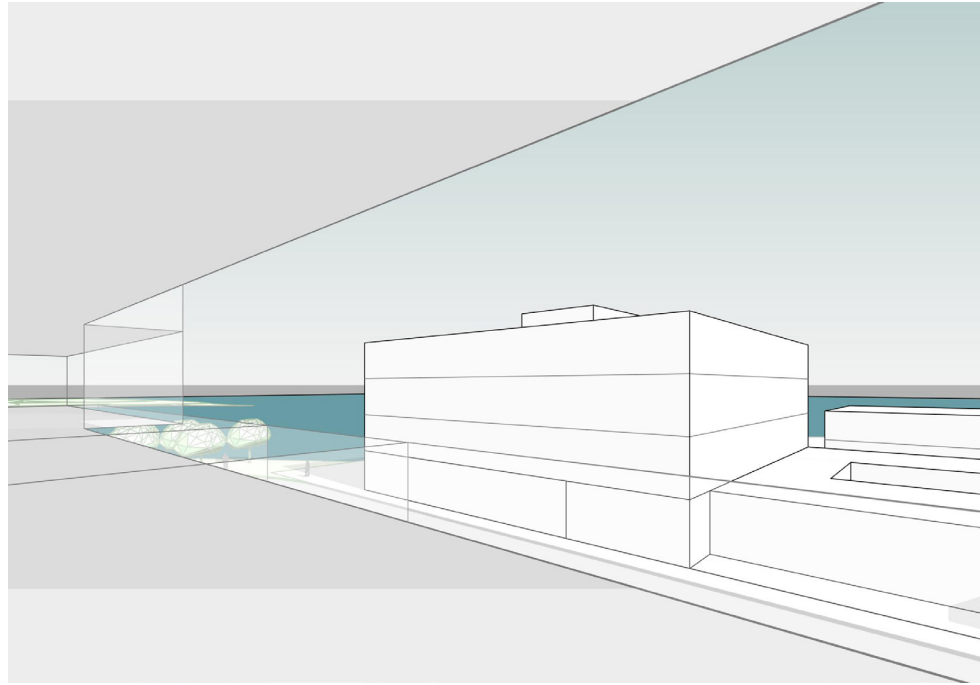
MASSING AXON



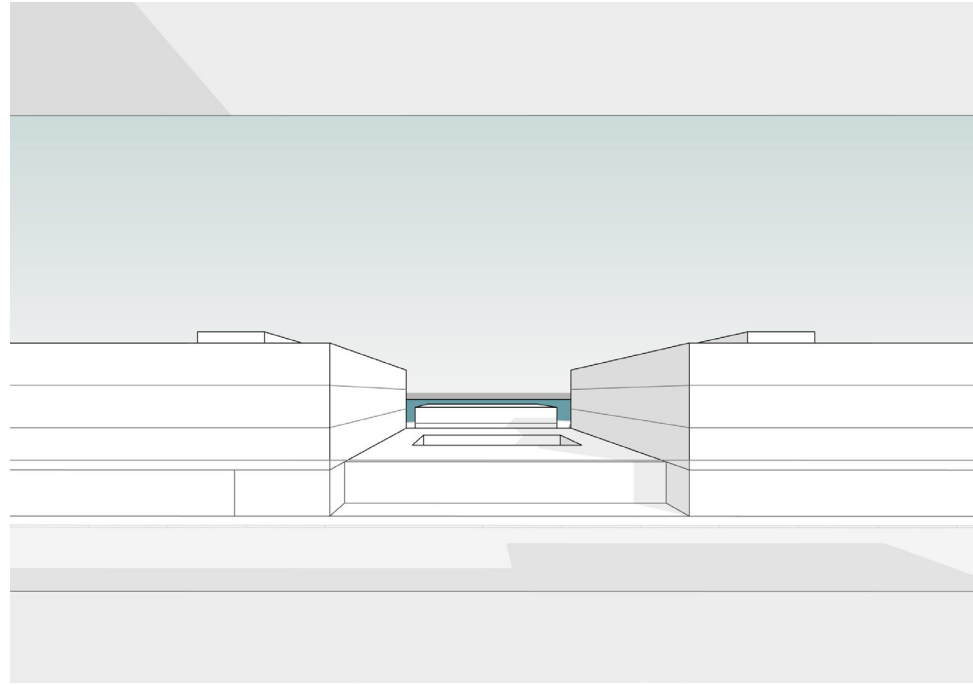
Proposed Project



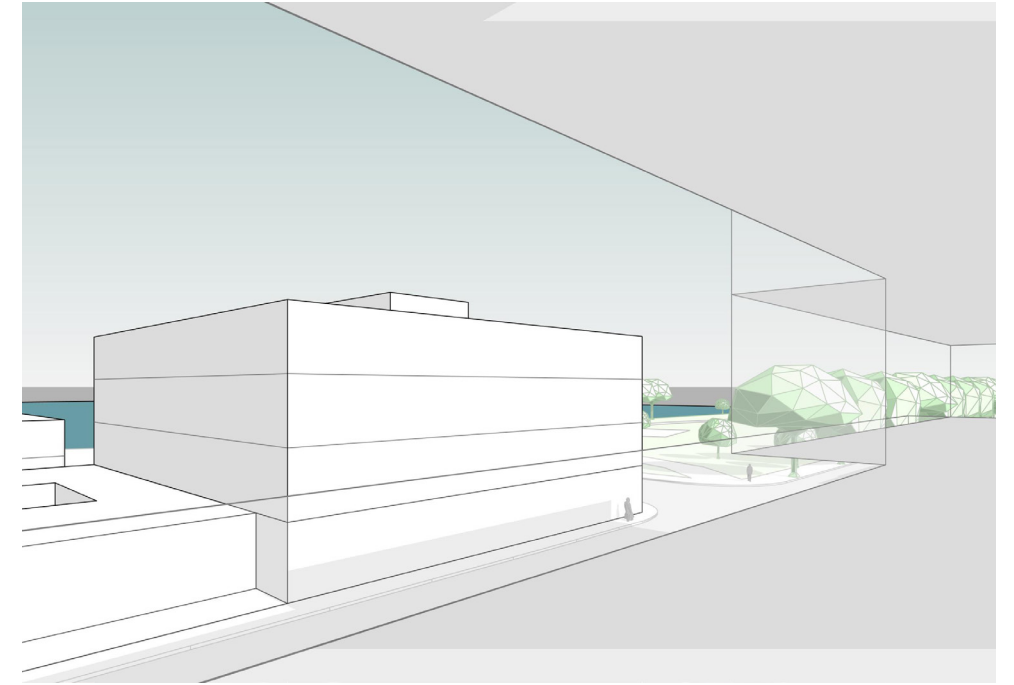
West Building Views



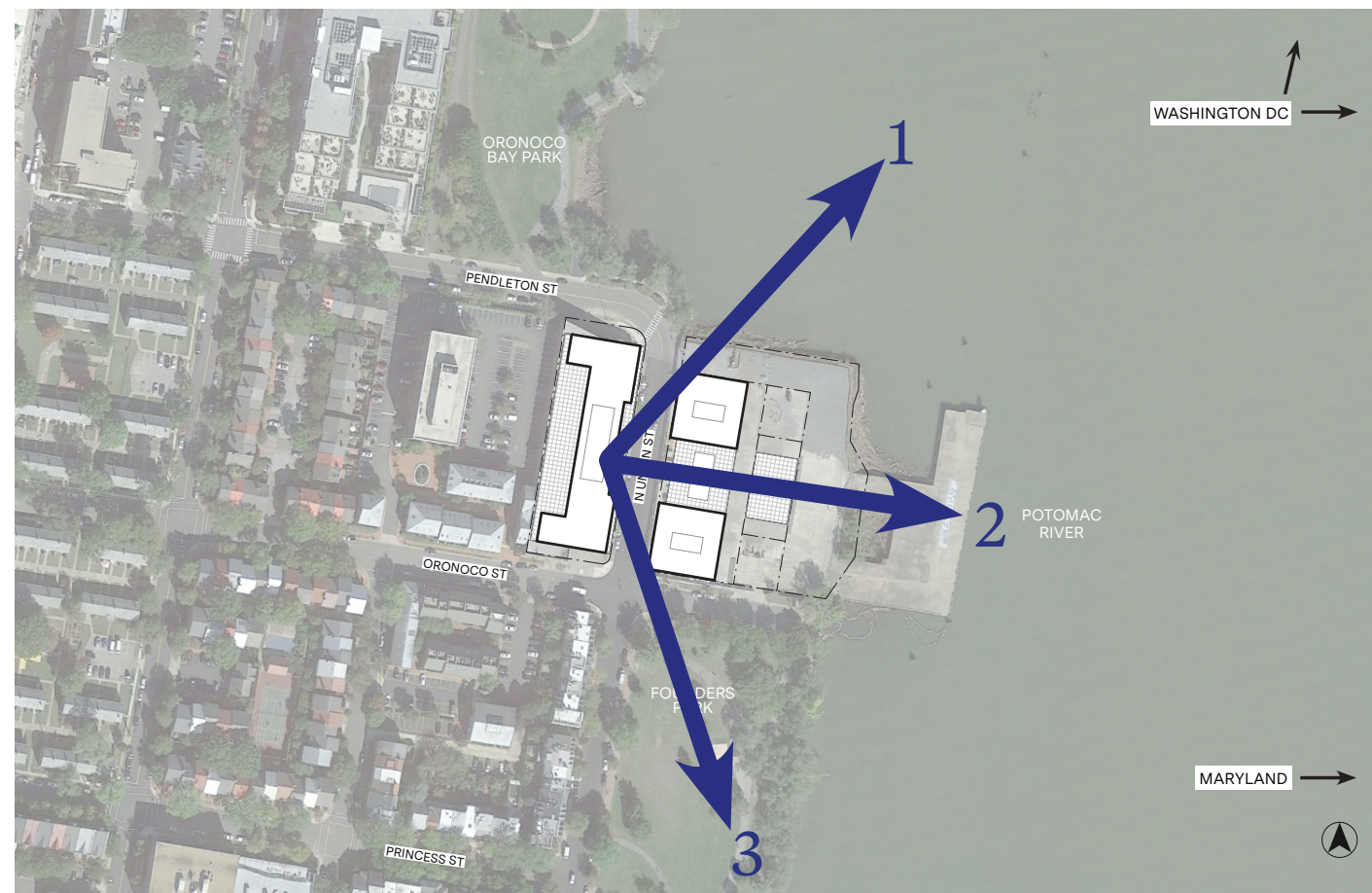
1. VIEW NORTHEAST (AT LEVEL 3)



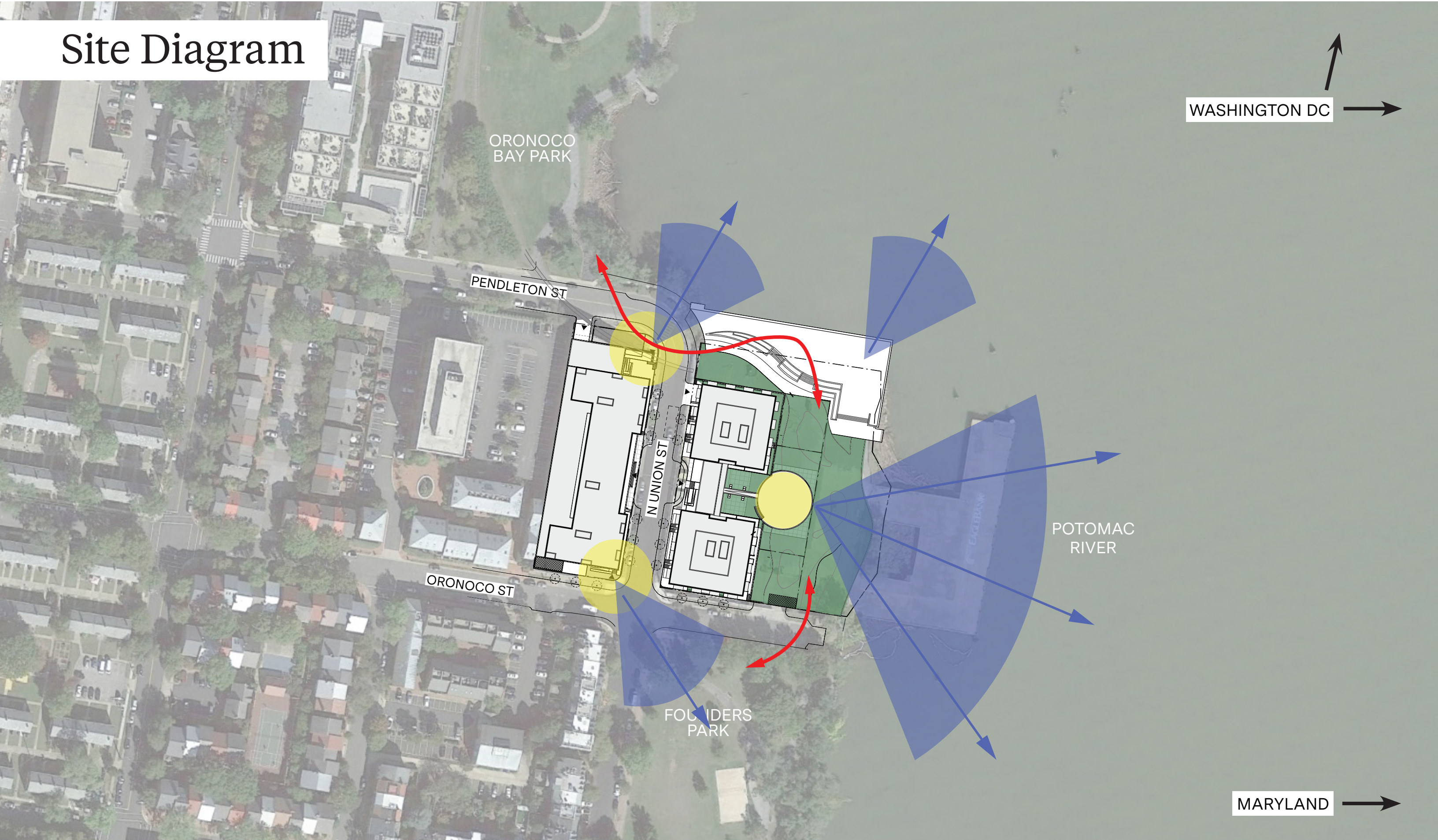
2. VIEW EAST (AT LEVEL 3)



3. VIEW SOUTHEAST (AT LEVEL 3)

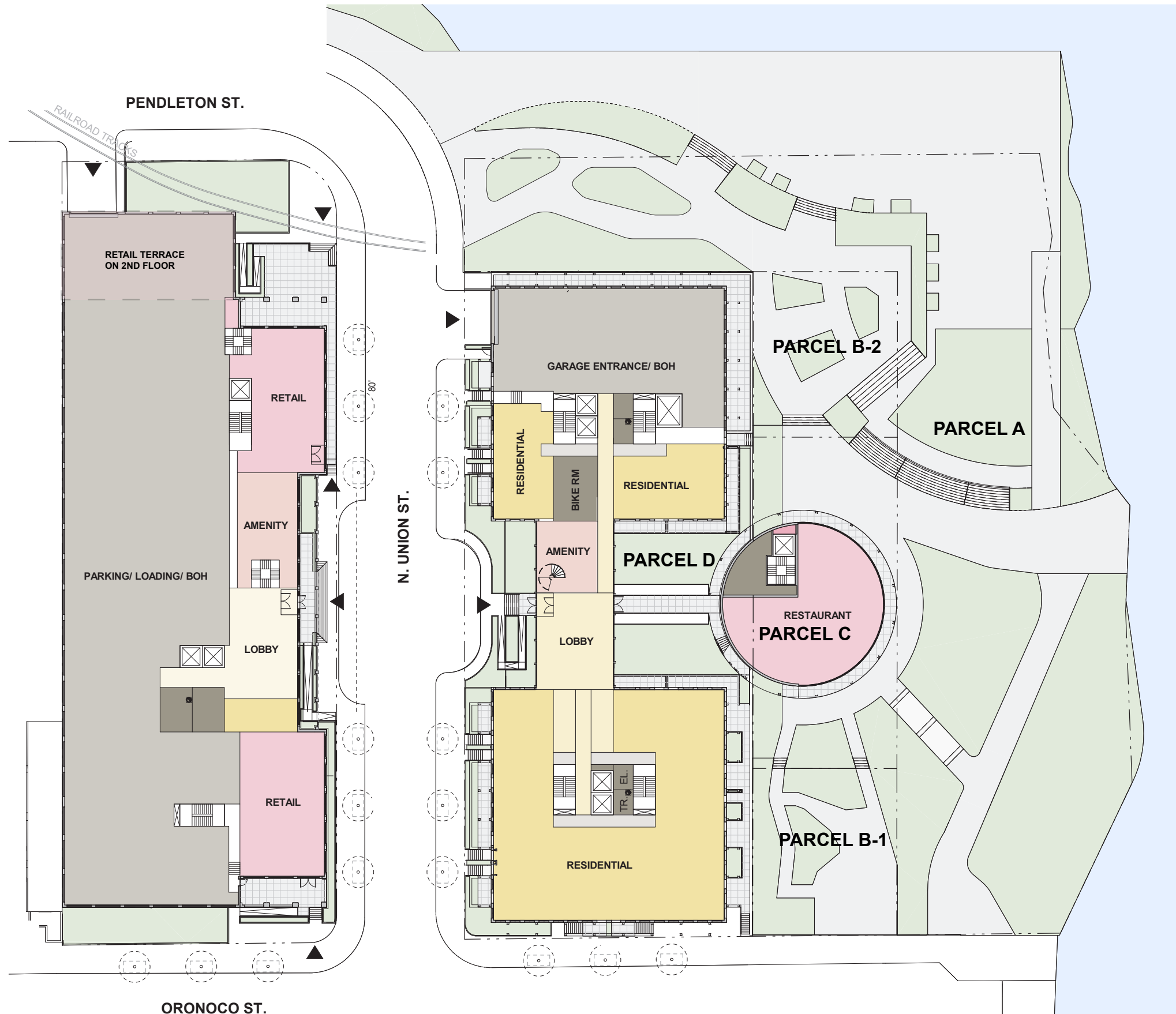


Site Diagram



Building Planning

Ground Floor Plan



Project Facts

3.4 Acre Site, 3 Parcels
 88 Total Units
 13,435 SF Retail/Restaurant
 206 Parking Spaces

West Parcel

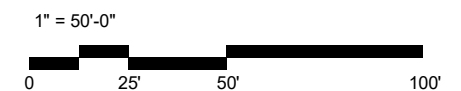
1 Acre Site
 39 Units
 9,092 SF Retail
 85 Parking Spaces
 62' Height

East Parcel

1.2 Acre Site (Parcels C & D)
 49 Units
 4,343 SF Retail/Restaurant
 121 Parking Spaces (includes tandem)
 41' Height

Open Space

1.2 Acre Site (Parcels A & B)
 Public Access to Water
 Landscape Amenities



Design Character

Design Character

Refined waterfront industrial, composed, textured brick & metal accents



Demolished Ford Plant/ Waterfront Industrial History



Torpedo Factory

Morris Adjmi Architects



Torpedo Factory

Rooney Properties



Alexandria Meets the Waterfront

RTN_Community Meeting



Alexandria/ Composition and Rythm

Land Design

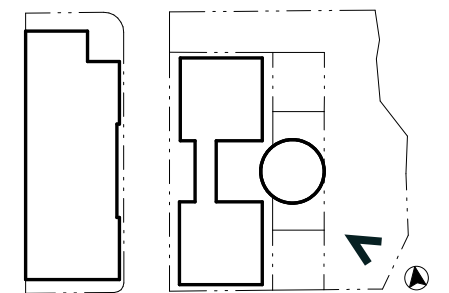
02.29.24

East Building

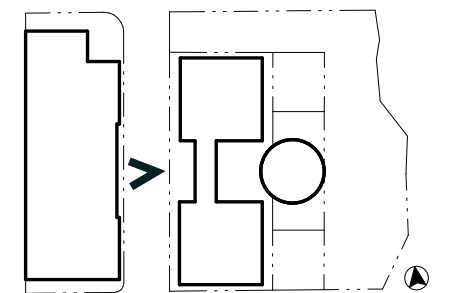
Aerial View from South East



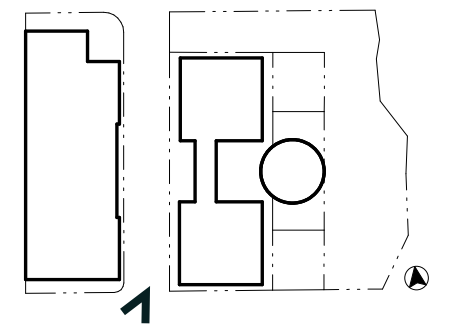
View from the Waterfront



N. Union St. Main Entry



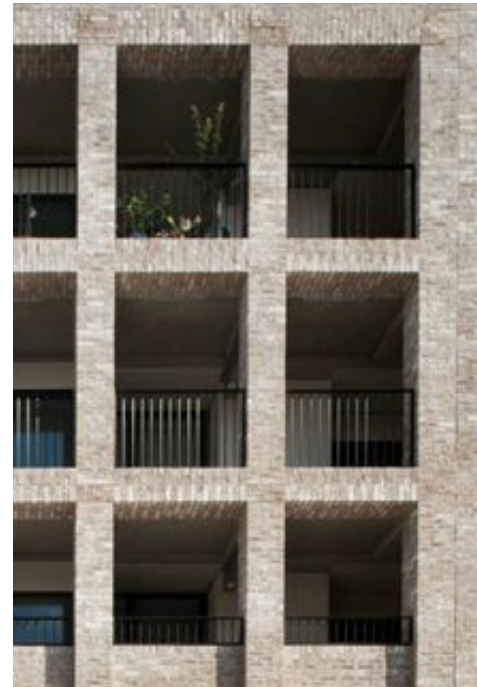
Oronoco St. & N. Union St. - View from SW



East Building Palette



REFINED INDUSTRIAL



INTEGRATED LOGGIA



METAL CHANNEL FRAME



GRID WINDOWS



PUNCHED WINDOWS



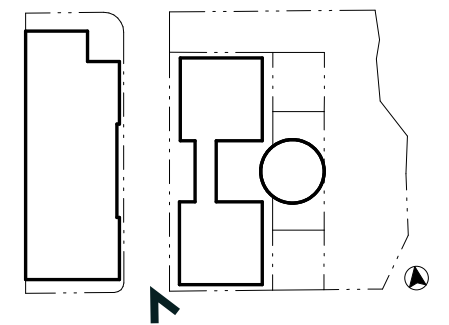
PLANTED PAVILION

West Building

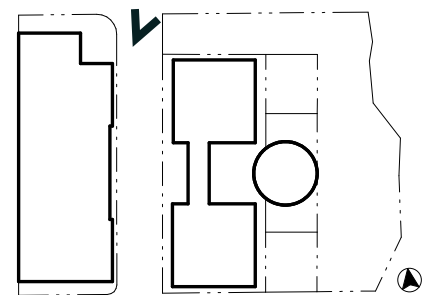
Aerial View from South East



Oronoco St. & N. Union St. - View from SE



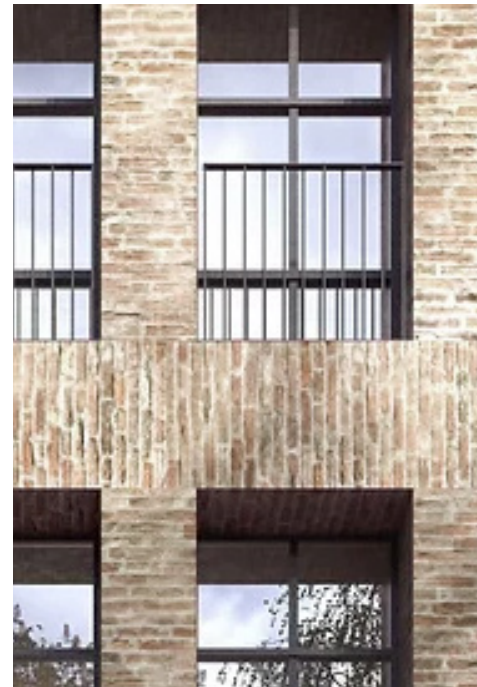
Pendleton St. & N. Union St. - View from NE



West Building Palette



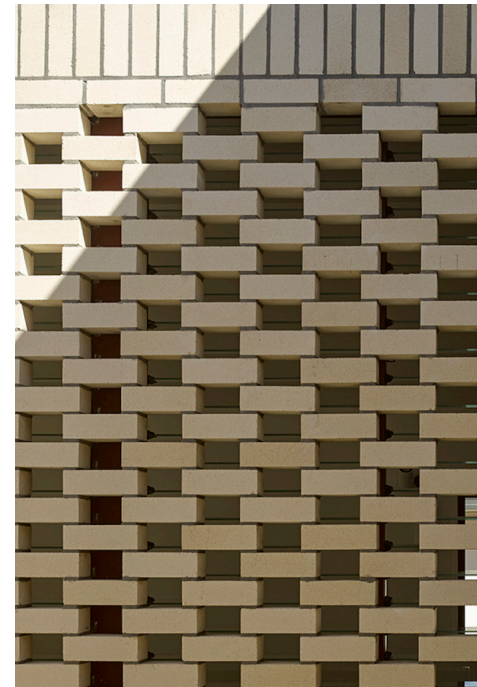
RIBBED BRICK



BRICK PATTERN



GLAZED BRICK/TILE



BRICK SCREEN



CAST STONE



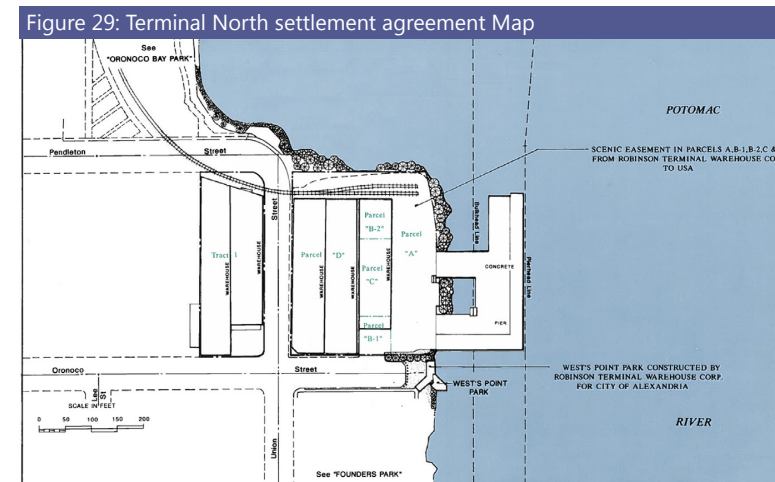
WARM GRAY METAL

Landscape

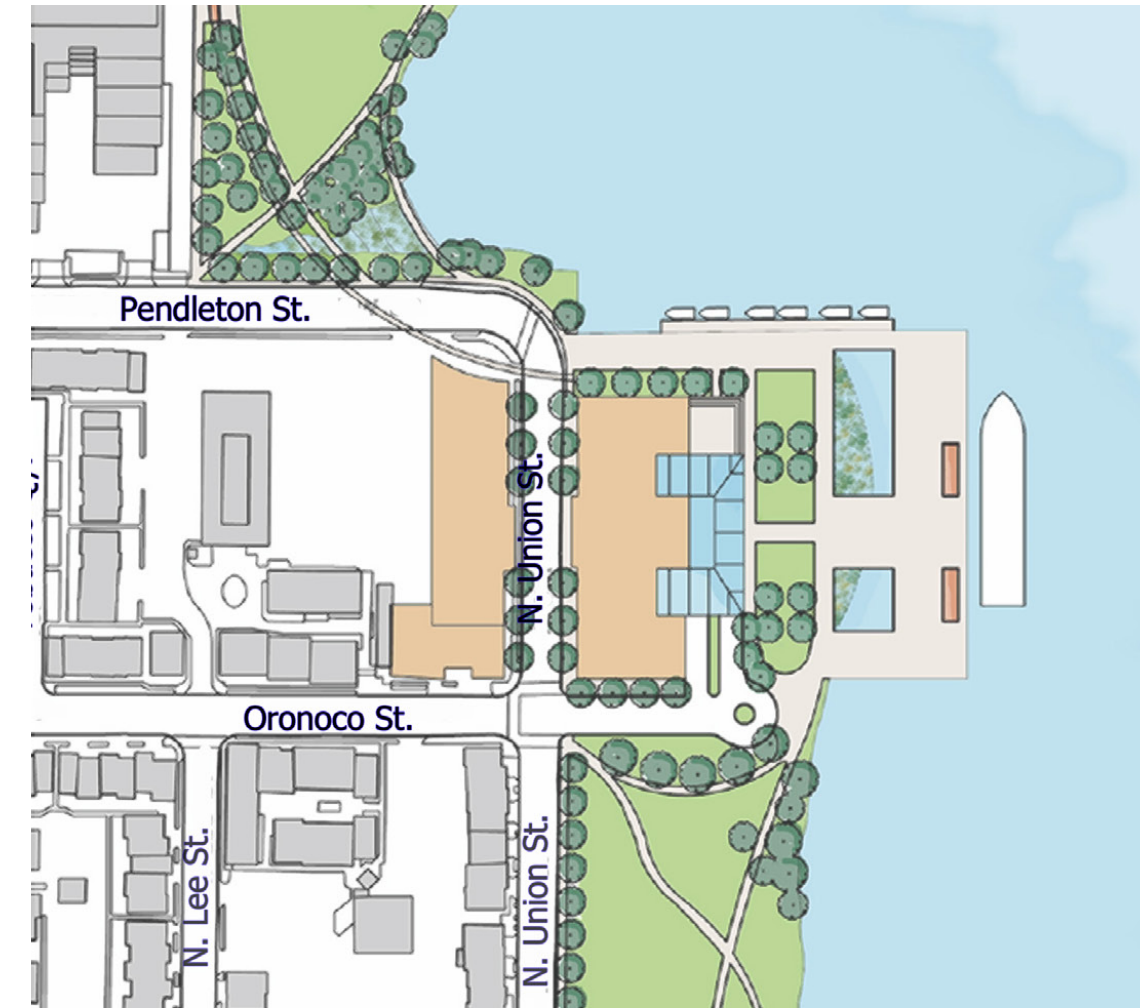
Waterfront Plan Open Space Overview



SEE PG. 21 OF ALEXANDRIA WATERFRONT S.A.P.



SEE PG. 90 OF ALEXANDRIA WATERFRONT S.A.P.



SEE PG. 2 OF ALEXANDRIA WATERFRONT S.A.P.

DEVELOPMENT GOALS:

1. Employ a land use mix and design which invites the public and encourages activity within the proposed development and in the adjacent public spaces.
2. Provide extensive public amenities and free access to and along the water's edge.
3. Improve access by extending Pendleton Street as a pedestrian connection to an improved public pier.
4. Pay homage to historic West's Point through public space design and interpretive features
5. Maintain a building scale compatible with existing fabric to the south and west.
6. Maximize water views from buildings, streets and rooftop open spaces.

SEE PG. 91 OF ALEXANDRIA WATERFRONT S.A.P.

spaces adjacent to the residential development. Ground floor residential units are not permitted.

5. The streetscape and pedestrian experience along North Union Street should be enhanced; in addition to undergrounding utilities, providing street trees and appropriate light fixtures, Union Street should present an obvious continuation of pedestrian access between open space areas to the north and south and be improved with, at minimum, wide sidewalks, landscaping and special street paving.
6. Historic interpretation, consistent with the recommendations of the History Plan, should inform every aspect of the design of the redevelopment and adjacent public spaces, with particular attention given to the West's Point site which is the area which extends from the water west up Oronoco Street to Union Street, and represents the origins of Alexandria.
7. Encourage modern design inspired by historic precedent (such as 18th century Alexandria warehouse architecture)

SEE PG. 92 OF ALEXANDRIA WATERFRONT S.A.P.

along Oronoco Street.

12. Shoreline treatment at Robinson Terminal North should include native plantings and naturalization where possible.
13. Redevelopment should be compatible with any biosparging technology, or other bioremediation, being employed by the City in treatment of the Oronoco Outfall-Alexandria Town Gas site located at the eastern end of Oronoco Street.
14. As part of redevelopment, on and off site public amenities shall be provided by the developer of the site. The specific amenities to be provided will be determined during the development review process. Desirable public amenities include:
 - Public art as a prominent feature of the public realm, both on public and private property. The recommendations of the Art Plan should be incorporated, to the greatest extent possible, in the design for the redeveloped warehouses, pier, and public spaces.
 - Open spaces with public access easements and/or dedications, provided as generally reflected in the Proposed Public Space and Active Frontages (Figure 31). The Plan encourages new open space to be provided on an improved pier, consistent with the federal settlement agreement. Riverside open space widths of less than 100 feet are acceptable only if it is found that an

SEE PG. 93 OF ALEXANDRIA WATERFRONT S.A.P.

DESIGN GOALS

- **INCREASE** PUBLIC ACCESS TO THE POTOMAC RIVER BY PROVIDING A KEY CONNECTION ALONG THE ALEXANDRIA WATERFRONT.
- **ENHANCE** KEY VIEWS AND SCENIC VISTAS FROM THE ROBINSON TERMINAL NORTH SITE.
- **INTEGRATE** THE SITE INTO THE EXISTING FABRIC OF THE WATERFRONT.
- **CELEBRATE** THE HISTORY OF THE SITE WITHIN THE CONTEXT OF THE CITY OF ALEXANDRIA.
- **DEVELOP** A LANDSCAPE THAT IS RESILIENT, FUNCTIONAL AND ENGAGING.

Context Map



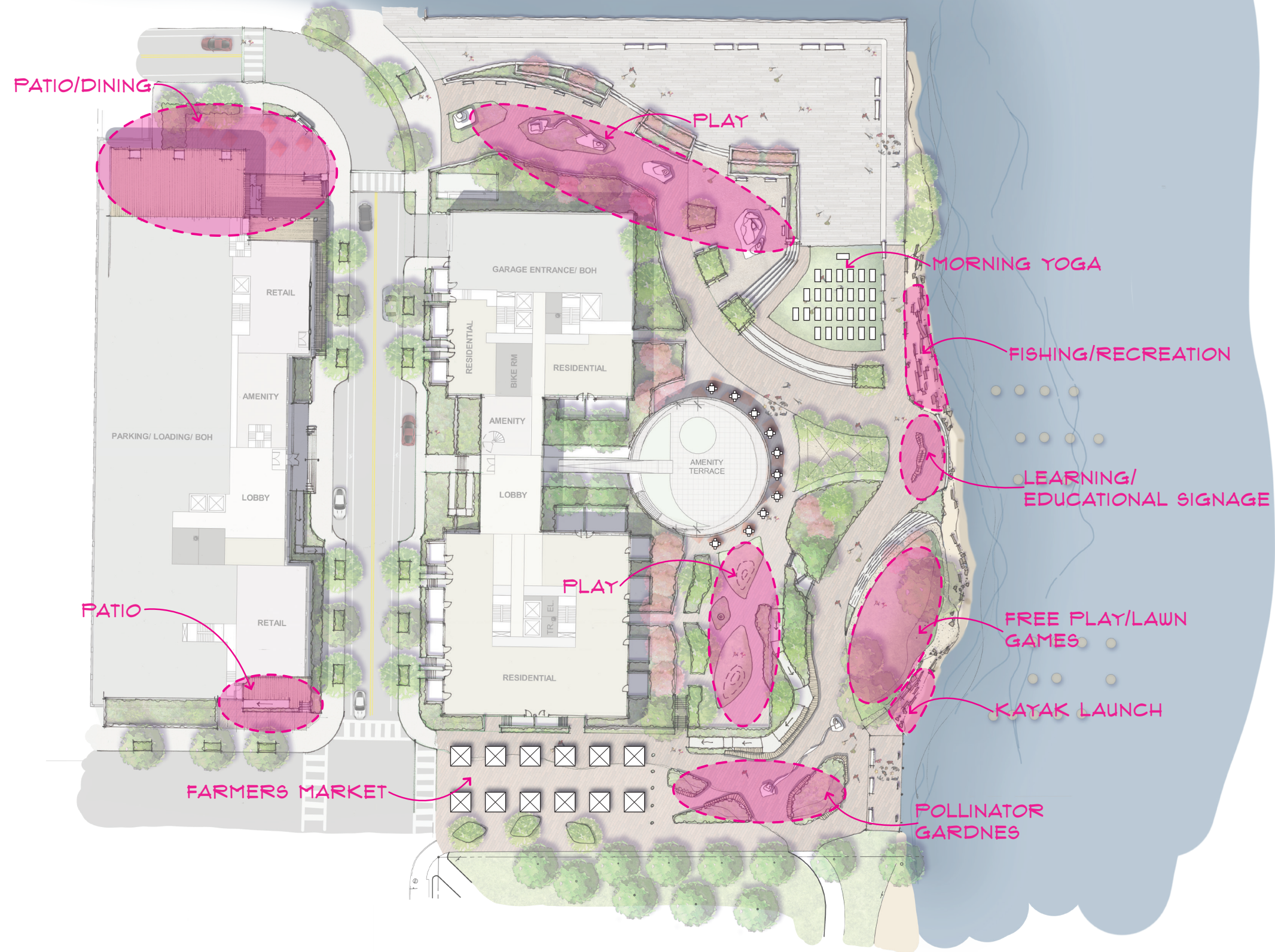
Concept



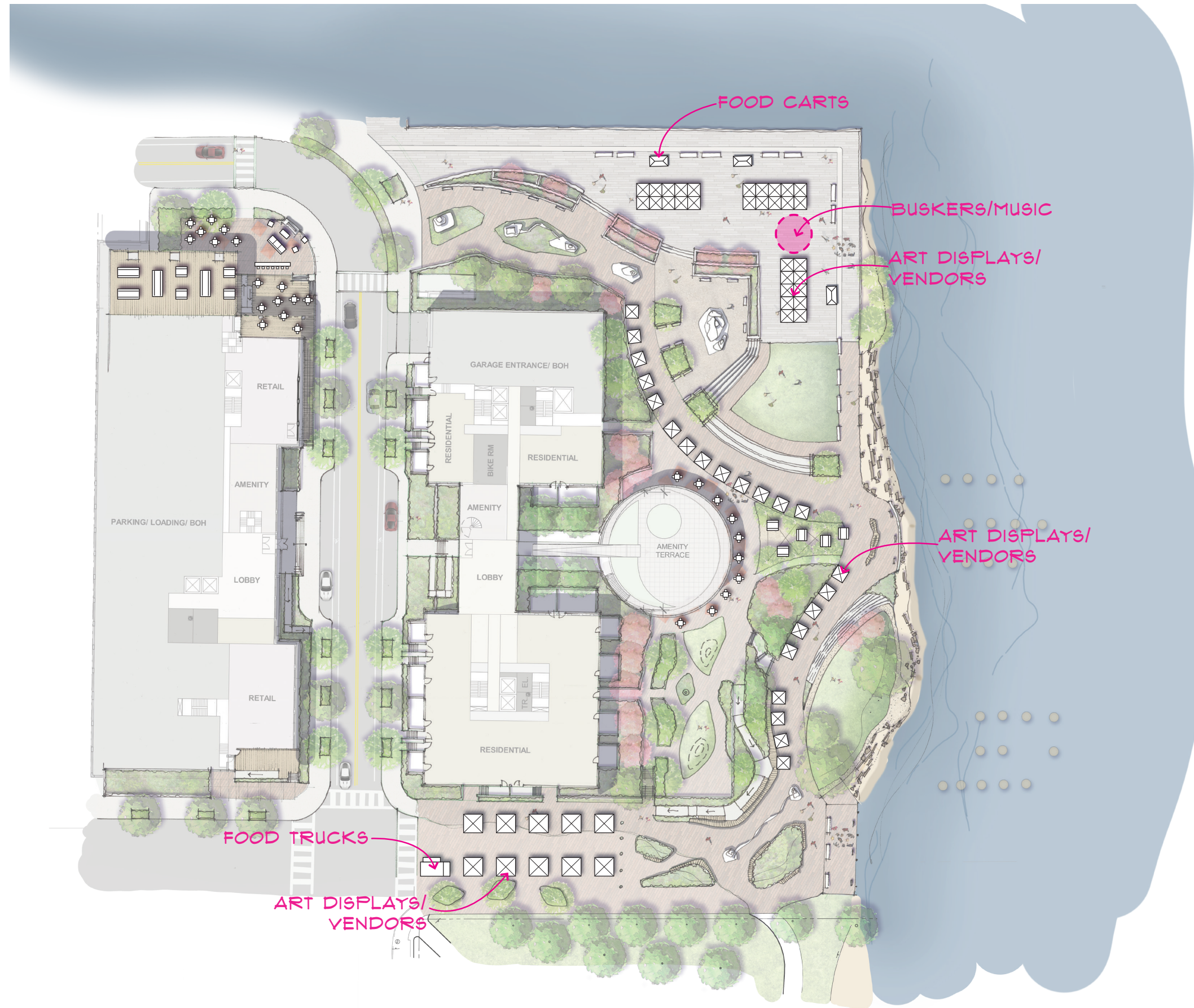
LEGEND	
1	ARENEW PLAZA
2	GATEWAY PROMENADE
3	PLAY-SCAPES
4	LAWN/ESPLANADE
5	PROMENADE
6	SHORELINE EXPERIENCE
7	RIVER OVERLOOK/ INTERPRETIVE ELEMENTS
8	PICNIC GROVE
9	RESTAURANT & ROOFTOP TERRACE
10	OVERLOOK TERRACE
11	WEST'S POINT PARK
12	ORONOCO ST. PLAZA & GARDENS



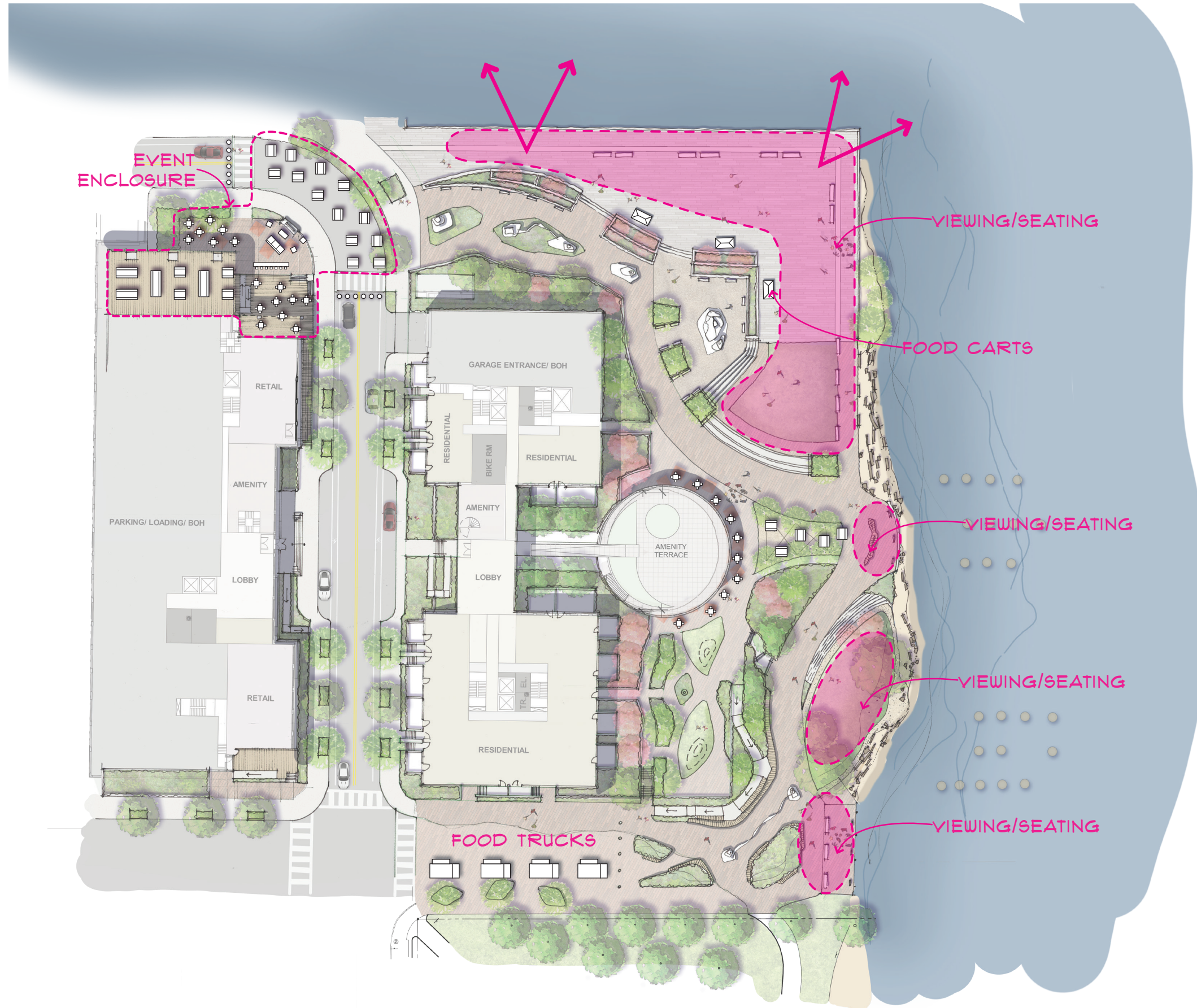
Potential Program: "Sunny Weekend"



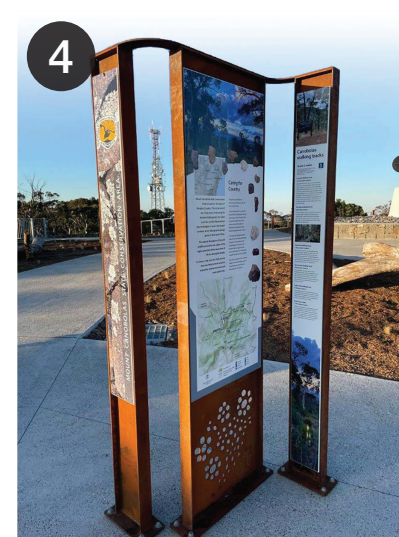
Potential Program: "Arts Walk"



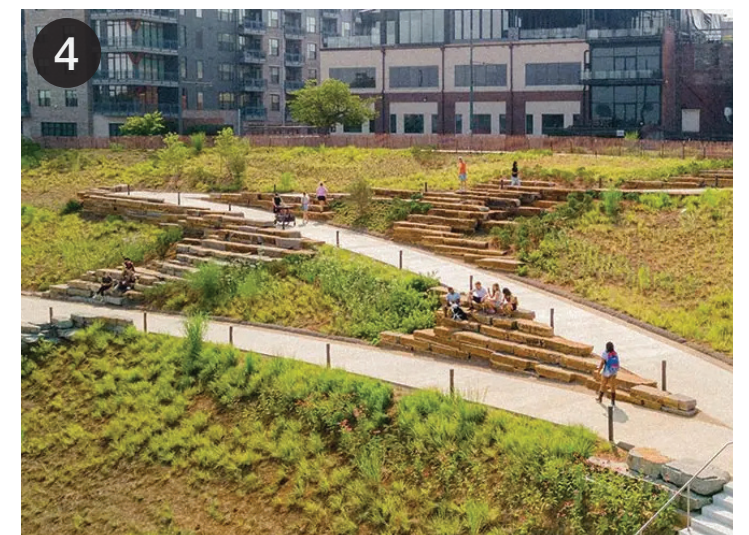
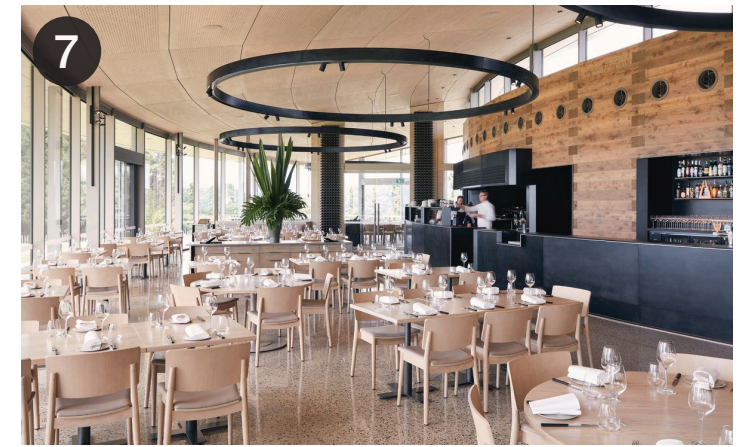
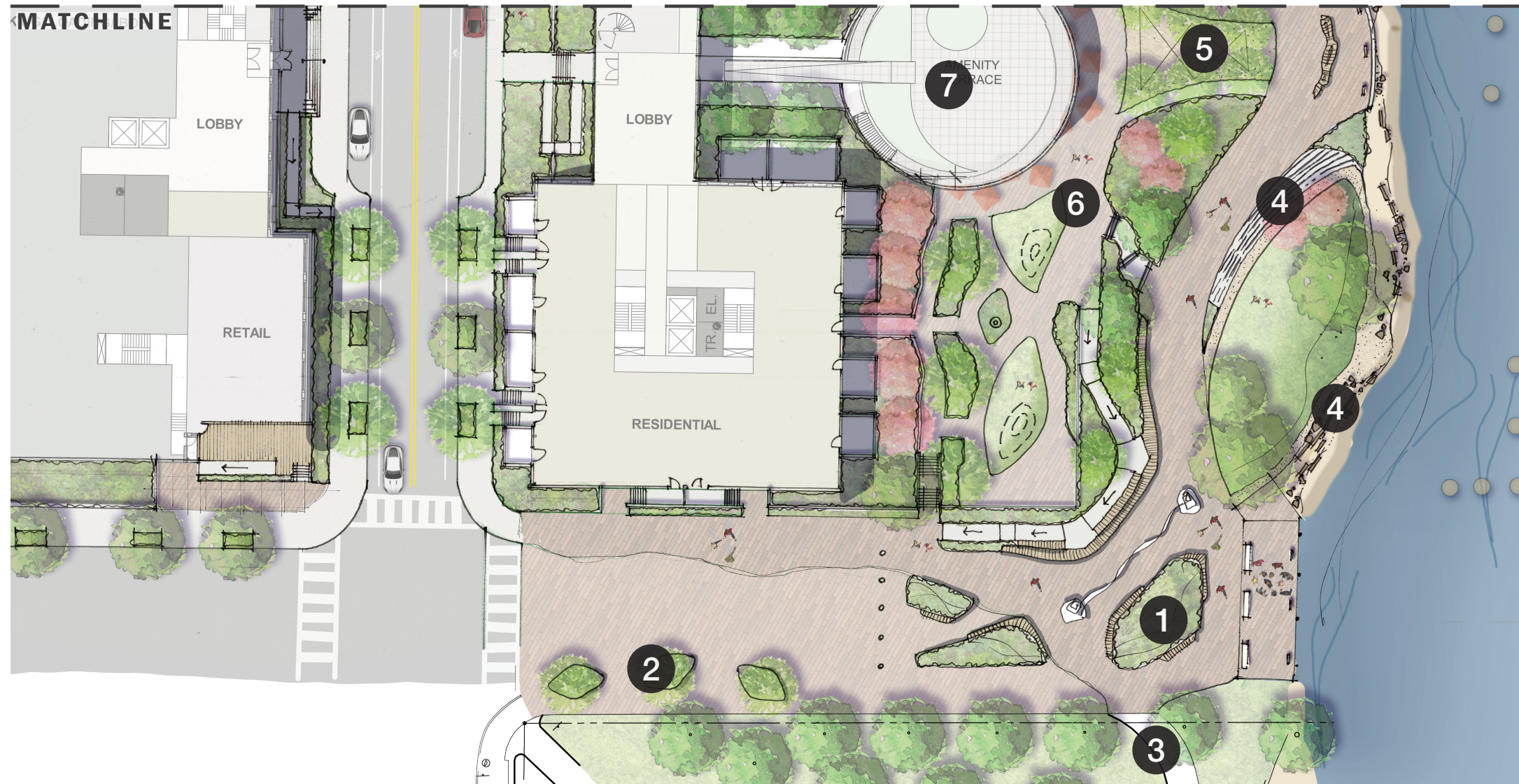
Potential Program: "Fireworks"



Site Character



Site Character



Aerial View from South East

